

KAMEHAMEHA SCHOOLS KAPĀLAMA

I MUA 2024

CLASS NEWSLETTER

ISSUE 1 | OCT 2020

WHAT'S INSIDE:

WELCOME

MEET

ELECTION

EVENTS

WEBSITE

CONTACTS



ALOHA E CLASS OF 2024 'OHANA!

Welcome to Kula Ki'eki'e - high school! We especially welcome our haumāna and their 'ohana who are brand new to Kamehameha this year. Our class is more than 430 students strong, and we mahalo Ke Akua and Ke Ali'i Pauahi for bringing us all together as one 'ohana.

We pray that you are safe and healthy, especially amidst the COVID-19 pandemic that has affected us all. We can't wait to see you in person once it's safe to do so. Although we begin this school year differently than ever before, we are committed to creating positive experiences that strengthen our bond as a class.

In just 3 1/2 years from now, our keiki will graduate from Kapālama. While it may seem like awhile, we realize that the days are long but the years are short. So let us make the most of our time together as we support each other in raising "good and industrious men and women".

Since this is our first class newsletter (we admit it's more like a small book) for the school year, there's a lot to cover. You can also review the enclosed information and more at our class website (ksk2024.org). Mahalo nui loa!



Me 'oukou ka welina o ke aloha!

Denny Ono, Class Advisor

Chontel-Tiare Ta'ala, Class Parent

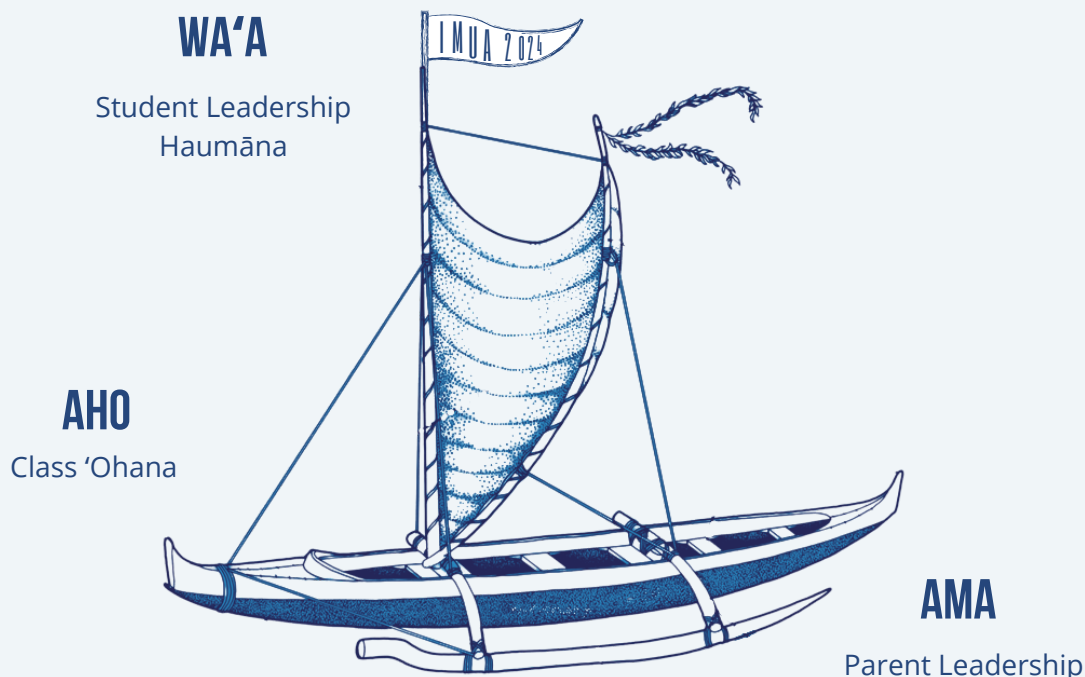
Jessica Ahmad, ATP Class Rep

Jennifer Anderson, ATP Class Rep

Sarah Ulep, ATP Class Rep

MEET OUR CREW

To honor our voyaging *ho'oilina* (heritage) and distinguish our class from the others, we have created a model to illustrate and inspire the many relationships within our class as we journey together.



Welo Alaka'i 'Ālohilohi (WA'A) - The wa'a is the canoe. It is the guiding vessel comprised of our haumāna and their ho'okele (students leaders and faculty advisors). Welo is heritage. Alaka'i is leader. 'Ālohilohi is brightness.

Alaka'i Mākua Aukahi (AMA) - The ama is the outrigger. It provides stability for the wa'a. Also called Parent Leadership Team (PLT), our Class AMA consists of the Class Parent, ATP Class Reps, and other key volunteer 'ohana positions as needed (e.g. Ho'olaule'a Class Chair).

Alaka'i Hui 'Ohana (AHO) - The aho are the lashings that secure the ama to the wa'a. Without it, the wa'a would be without support of the ama and the ama would be without direction of the wa'a. The aho are the ties that bind us together so we can securely move forward.

Hoe!

CLASS WA'A

Class Board

The Associated Students of Kamehameha Schools (ASKS) is the name of the student leadership program. ASKS has its own officers and gathers input from each class, primarily through the Class Board which govern each class. Every year, at least six positions are eligible for election: President, Vice President, Secretary, Treasurer, and two openings for Class Representative-At-Large. Aside from freshman year, elections are typically held in late spring. Faculty can also appoint additional positions as needed. Congratulations and mahalo nui loa to our Freshman Class Board!



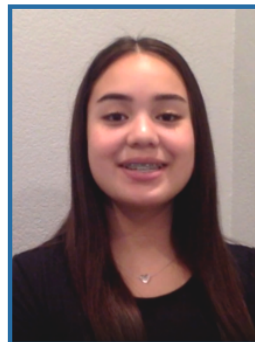
*President
Mia Estrada-Morse*



*Vice President
Selah Fronda*



*Secretary
Leina'ala Wong*



*Treasurer
Leah Kailiuli*



*Class Rep-At-Large
Nicson Alapai*



*Class Rep-At-Large
Kaimana Kon*

Note: Faculty-appointed positions for both ASKS and our Class Board are forthcoming.

Class Advisor

Each Class Board is overseen by a Class Advisor. This full-time kumu serves as the bridge between student leadership and 'ohana, and commits to the class until they graduate from high school. Mahalo piha to our Class Advisor, Mr. Denny Ono, who also teaches math.



A message from our Class Advisor...

Aloha parents and guardians of the Class of 2024!

I hope everyone is healthy and staying safe! My name is Denny Ono, and I am the Class of 2024 advisor. This is my 5th class that I have advised at Kamehameha and I could not be more thrilled to be working with another green class. I look forward to working with all of you over the next four years. This year will be different, to say the least. We are embarking on our first year together and our goal is to make it the best we possibly can amidst this COVID-19 Pandemic.

All the students and advisors in the leadership program are eagerly awaiting clearance to get activities going while ensuring these activities are safe and enjoyable for the class and school. We cannot reiterate how much we are still planning for all of the "normal" events, in spite of monumental challenges.

Organizing major student activities are, for the most part, completely student driven events, planned and executed by the haumāna. Whether we get to do them of course is a little out of our control this year and will be dependent upon school/city/state/federal guidelines and restrictions. We continue to pray for all our haumāna to return to campus as soon as it is safe enough to do so. In the meantime, the haumāna will be planning for multiple scenarios in regard to our Freshman social and a Freshman dance. Again, they will look different, but the student leaders are going to do their best to make them happen.

Please know that every decision made by our Kamehameha Administration regarding our keiki is extremely diligent and thoughtful and puts our keiki health and safety first. KS Admin must monitor the daily changing numbers of Covid-19 cases and deaths, and that affects the decisions as to when it is safe for our keiki to return to campus. Other Departments at Kamehameha would like you all to know:

- Our Kumu miss having the students in the classroom.
- Counselors miss the kids and are available anytime for both students and parents.

We have several activities to look forward to this year. (Listed in the calendar in this newsletter.) Again, due to the current pandemic, all of these activities will look different this year, however, we will continue to work hard in planning these events with the safety of the students in mind.

As class advisor, I am looking forward to working closely with the class officers, the homeroom representatives, the class parents, ATP parent representatives, the Director of Student Activities and the other class advisors to ensure safe and enjoyable activities and events for the school.

If you have any questions at all, please feel free to contact me or our Student Leadership & Activities Director, Mr. Andrew Lai.

Aloha,
Denny Ono
Class Advisor, Class of 2024
deono@ksbe.edu
808-842-8531



CLASS AMA

All 'ohana play an important role in our journey as a class. As the AMA to our WA'A, parent leaders provide vital support for the school, haumāna, and class 'ohana.

Class Parent

The various kuleana of the Class Parent includes supporting student leadership, being a liaison between the school and the class 'ohana, and working alongside ATP. Activities that involve the Class Parent are Song Contest, socials, dances, etc. The Class Parent position is a 4-year appointment as determined by school faculty.

A message from our Class Parent..

Aloha e Class of 2024!

'O Chontel-Tiare Ta'ala ko'u inoa and I am grateful and excited to continue serving as Class Parent. My husband, Paul, and I live with our five keiki in Kapolei. Our daughter, Liahona, is "psyched" to be a freshman this year. Our 'ohana hopes yours is healthy and happy.

I look forward to seeing your 'ohana in person. As soon as it's safe to gather, we're gonna party hardy and have a ton of fun making up for lost time. Guarans! I'm committed to creating positive *pilina* (bonds) within our class. From me, you can expect an innovative and inclusive approach, clear and consistent communication, and good ol' fashioned elbow grease to get things done.

Mahalo for this opportunity to serve. I'm always open to help and suggestions, so feel free to reach out to me anytime.

Me ka lōkahi,
Chontel (or Tiare or Liahona's mom, haha)
imua@ksk2024.org / 808-594-3058 (class purposes only)



*Class Parent
Chontel-Tiare Ta'ala & 'Ohana*





ATP Class Representatives

ATP Class Reps work within ATP (the schoolwide group) and alongside their class to provide activities, events, and services. (Please note a distinction between school and class endeavors.) ATP Class Reps are nominated and appointed each spring, and commit to serving for a full school year. They are given an annual budget to use for class needs that are separate from the school's class budget. ATP events include 'ohana and thus typically take place after school/work hours. Previous class ATP events include field trips and service projects. Important annual schoolwide ATP events are Relay for Life and Ho'olaule'a. This year, we're lucky to have three returning ATP Class Reps. Mahalo e mākua!

Messages from our ATP Class Representatives...



*ATP Class Representative
Jessica Ahmad
& Daughter Shyla Bowles*

Aloha! My name is Jessica Ahmad and my daughter is Shyla Bowles. We're from Kailua but currently living in Kapolei. Shyla was blessed to get into Kamehameha in Kindergarten. It has been great getting to know and create relationships with all the parents from over the years. I hope to create new relationships with our new incoming freshman families as well as the other middle school families I don't know. Hope we all have a great year even in this crazy pandemic.

Aloha Class of 2024!

I am excited to be your ATP Class Rep with Jess and Sarah this year! We have big shoes to follow after a few awesome parents also once held these positions. We are poised and ready for the opportunity to provide you with meaningful and memorable family gatherings and look forward to working alongside you throughout the year. Our beloved Pauahi has blessed each of us with the gift of this wonderful education and experience at the Kamehameha Schools. My daughters have been blessed to call this place home since Kindergarten. I, on the other hand, not until 9th grade. But nonetheless, Kamehameha has become a very sentimental place for my ohana and I hope you feel the same by the end of our school year.



*ATP Class Representative
Jennifer Anderson
& Daughter Jada-Capri Anderson*



*ATP Class Representative
Sarah Ulep & 'Ohana*

Aloha Class of 2024! We're back! I am honored to serve as your 2020-2021 ATP Class Rep. Jenn, Jess and I look forward to working with your families, in this unprecedented time, to bring our class together as one. Our family has been blessed with this gift of education by Pauahi and we look forward to working to preserve the legacy and vision of Pauahi.

CLASS AHO

Every 'ohana in our class is a member of our Class AHO because every 'ohana plays a vital role in the success of our class. There are many opportunities to give of our time, talents, and treasures along the way. Volunteers and donations will be requested when needs arrive. We are grateful to all those who answer the kāhea. To declare how you can help, please complete a Class Kōkua Form at ksk2024.org/kokua.

ELECTION

Mahalo to all those who participated in our first Class Election which concluded in September. Haumāna were able to vote for their Class Board officers and class color. In addition to the class officers listed previously in this newsletter, **'ōma'oma'o (green)** was voted as our class color.



Our class color is meant to be a source of unity and pride. It will identify our class at Song Contest, pep rallies, and other events throughout high school and beyond as alumni. Now that our class color is selected, we will soon open an online shop with optional class apparel and accessories. If you have suggestions for designs and/or products, submit them at ksk2024.org/contact.

For more information about the election results and process, visit ksk2024.org/election.

EVENTS

As you might assume, the COVID-19 pandemic has already sidelined many in-person events and makes it difficult to plan future in-person events. But we are working on creating engaging virtual activities and are hopeful about gathering in-person as soon as it's safe. Uncoming events include:

PINK FOR PAUHI WEEK: October 12 - 16, 2020. Students and staff are encouraged to wear pink to support Ke Ali'i Pauahi Foundation and honor all those who have been affected by cancer. More information can be found in the Daily Bulletin. pauahi.org

SONG CONTEST LEI & SASHES: We are working on creating and/or procuring 475 green yarn lei and 250 green sashes in preparation for Song Contest. Details TBA.

FRESHMAN SOCIAL: Our Class Board are working on creating an event to welcome their classmates. Details TBA.

FALL SPIRIT WEEK: October 26-30, 2020. Dress up days and activities. More info to come in the Daily Bulletin and on ASKS Instagram page. [instagram.com/asks_kapalama](https://www.instagram.com/asks_kapalama)

KSK 2024 OHANA MEETING: October. Virtual. Details TBA.

FOUNDER'S DAY CELEBRATION / HO'OLAULE'A / SONG CONTEST / CLASS BLOOD DRIVE / CLASS DONATION DRIVE: Planning underway. Details TBA



If you have suggestions or kōkua to offer, please let us know at ksk2024.org/contact or imua@ksk2024.org.

If your student has suggestions for class activities, they can contact their Class Board and/or Mr. Ono at deono@imua.ksbe.edu.

WEBSITE

To better communicate with our class and provide accurate, up-to-date information, we've created a class website at ksk2024.org.

As the online home of our class, our website is secure, private, and available only to verified KSK 2024 'ohana, haumāna, and KS employees. Features include a directory, social network, calendar, gallery, forms, signups, online store, email subscription, private messaging, community resources, and more. The website is created, owned, and operated by our class, not the school. You are not required to join but we encourage you to at least visit often for important information. The full site will launch on October 15, 2020.



KSK2024.ORG



CONTACTS

Grade Level Counselor (A-K): Keawe Kalama (808) 842-8432 / rokalama@ksbe.edu

Grade Level Counselor (L-Z): Elisa Chong (808) 842-8520 / elchong@ksbe.edu

Director of Student Leadership & Activities: Andrew Lai / anlai@ksbe.edu

Class of 2024 Advisor: Denny Ono / deono@ksbe.edu

Class Parent: Chontel-Tiare Ta'ala / (808) 594 - 3058 / imua@ksk2024.org

Class ATP Reps: Jessica Ahmad / Jennifer Andersn / Sarah Ulep / atp@ksk2024.org

KSK Kula Ki'eki'e: https://www.ksbe.edu/education/kapalama/high_school/

KSK Kula Ki'eki'e Distance Learning: <https://blogs.ksbe.edu/khsdl/>



*I mua e nā pōki'i
e inu i ka wai 'awa'awa
'A 'ohe hope e ho'i mai ai*